



**APPLICATION**

For automatically dispensing bedding into animal cages as they are conveyed through the unit.

**DESCRIPTION**

Basil 3600 Bedding Dispensers are designed to automatically dispense bedding into animal cages as they pass through the unit. The dispensers are capable of handling most solid bedding used in the care of laboratory animals.

A controlled level of bedding material is dispensed to each cage as it passes through the dispenser. The amount of bedding can be varied by adjusting the dispensing rate knob.

Excess bedding falls through the roller conveyor and is returned to the storage hopper by the dispensing conveyor.

The storage hopper can be located on the right or left side of the cage conveyor, as viewed from the loading end.

Cages may be manually loaded onto the dispenser conveyor top-side-up, or automatically inverted and transferred to the dispenser conveyor as they come out of a tunnel washer (see SD517).

The cage conveyor is 42" (1067 mm) wide; the tunnel opening is 12" (305 mm) high; and the storage hopper has a 11-1/2 cu ft (0.32 cu m) capacity.

**STANDARDS**

CE marking available upon request.



(Typical only - some details may vary.)

The Basil 3600 Bedding Dispenser is compatible with the following brands of bedding:

- ALPHA-dri®
- Aspen Chips North East
- Bed-o' cobs® 1/8" (3 mm)
- Bed-o' cobs® 1/4" (6 mm)
- Beta Chip North East
- Care Fresh
- Hardwood Sawdust
- Pine Shaving North East

® Registered trademark of The Andersons, Inc.

**Dimensions (W x H x D):**

88-1/4 x 61-1/2 x 100-1/2"  
(2242 x 1562 x 2553 mm)

**The Selections Checked Below Apply To This Equipment**

**VOLTAGE**

- 208 V, 60 Hz, 3-Phase, 4-Wire
- 480 V, 60 Hz, 3-Phase, 3-Wire
- 380/400/415 V, 3-Phase, 50 Hz, 3-Wire  
(available upon request)

**HOPPER SIDE**

**(FACING LOAD END)**

- Right
- Left

Item \_\_\_\_\_

Location(s) \_\_\_\_\_

## FEATURES

---

**Controls** include an ON/OFF Power switch, a STOP pushbutton, ON/OFF buttons for the dispenser and dust collector, and a knob for adjusting the bedding rate.

**Cage Conveyor System** includes 26 1-1/2" (38 mm) diameter PVC rollers to move the cages driven by a 1/6 HP (125 W) motor. Rollers are designed for free movement on the hub and are easily removable for cleaning purposes.

**Dispensing Conveyor** system includes a heavy chain that allows bedding to pass through the chain without jamming in the drive sprockets. Low friction UHMW guides and wear pads provide smooth, quiet travel throughout the dispensing cycle. The dispenser belt motor is 1-HP (746 W), variable speed drive.

**Four Service Access Panels** allow sprocket and chain repair of cage conveyor roller. The unload ends of the dispenser have access panels. The loading hopper has a hinged cover. The dispensing belt has a removable cover.

**Clean-Out Door** located on the unload end of the dispenser, allows access to the lower hopper. A drain connection with plug in the lower hopper aids in cleaning and draining the unit.

**Adjustable Legs** allow leveling the unit and adjusting the conveyor height.

**Dust Collection System** removes dust generated by the filling operation, and eliminates the need for connection to a building exhaust. System includes a 2-HP (1.5 kW) blower and a 55-gallon (208 L) drum connected to the dispenser vent. System has an ON/OFF switch on the control panel and can be located up to 10' (3 m) away from the dispenser.



**Dust Collector**

**Knocked-Down Shipment.** Unit is disassembled and shipped in sections that will pass (uncrated) through a 3'5" x 6'8" (1041 x 2031 mm) opening.



## Cage Flip-Over System

**Cage Flip-Over System** (located at the conveyor load end) grabs cages coming from the Tunnel Cage Washer and flips them right side up onto the bedding dispenser conveyor before filling them with bedding. The standard flip-over system is compatible with the majority of standard cages, with the exception of cages for which height divided by width or length (whichever is smallest)  $\geq 1.2$ .

**Photo-Electric Conveyor Stop** is provided at the end of the conveyor to stop the conveyor drive when an item reaches the end of the conveyor (when connected to a Basil 6000® Tunnel Cage Washer).

**Seismic Tie-Down** is available. Dispenser is built to comply with Seismic Zone 3 and 4 requirements.

## CONSTRUCTION

---

All structural support is #304 stainless steel.

The storage hopper is 12-gauge stainless steel.

## UTILITY REQUIREMENTS

---

### Electricity

208 V, 60 Hz, 3-Phase, 4-wire,  
13.9 Amps; or 480 V, 60 Hz, 3-Phase, 3-wire, 5.6 Amps.  
380/400/415 V, available upon request.

## NOTE

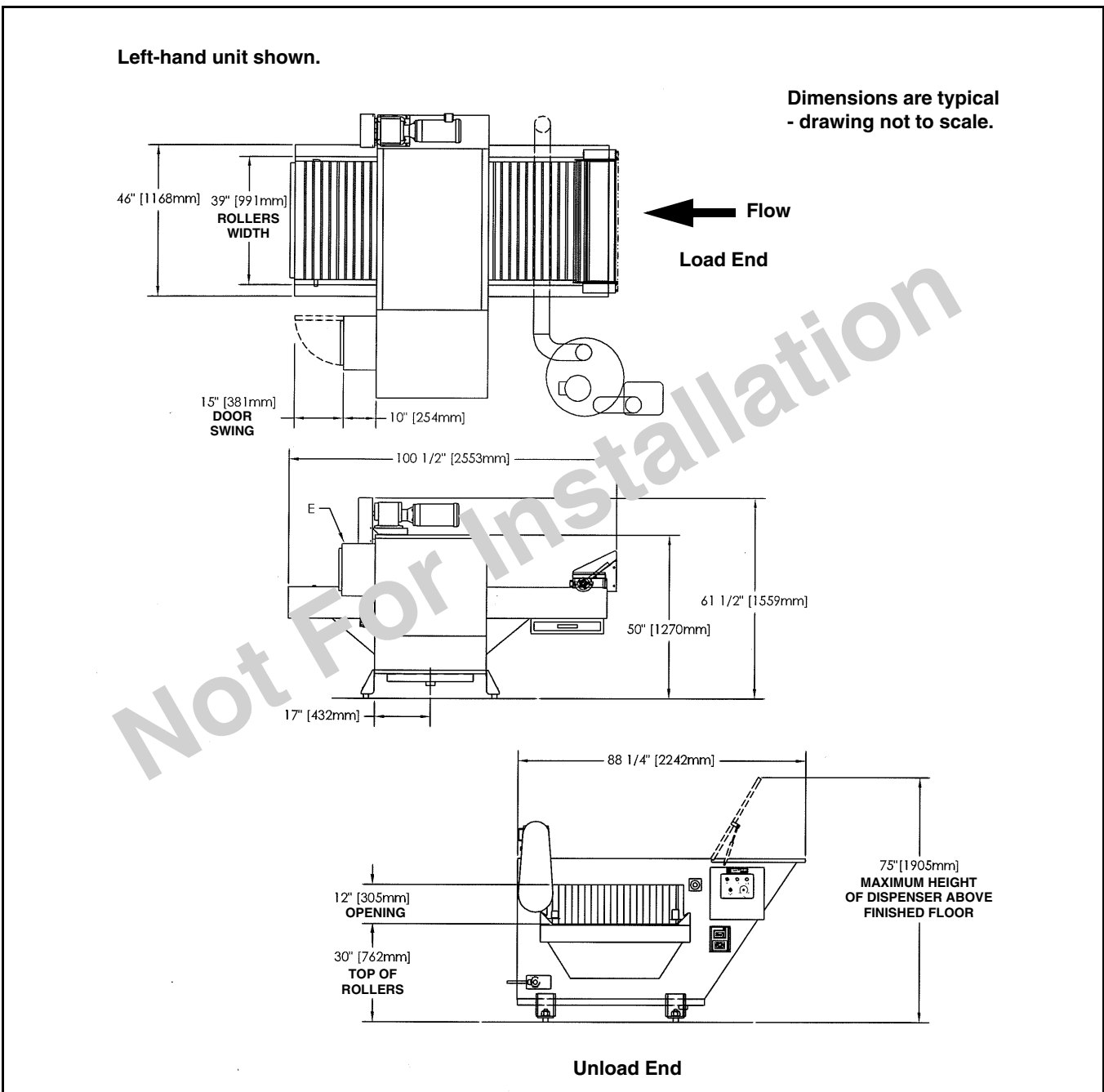
---

Disconnect switch (with OFF position lockout only – not provided by STERIS) should be installed in electric supply lines near the equipment.

**CUSTOMER IS RESPONSIBLE FOR COMPLIANCE WITH APPLICABLE LOCAL AND NATIONAL CODES AND REGULATIONS.**

**ENGINEERING DATA**

Description	42" (1067 mm) Conveyor
Shipping Dimensions W x H x L Weight	56 x 70 x 97" (1422 x 1778 x 2464 mm) 1534 lb (696 kg)
Shipping Dimensions W x H x L Weight	39 x 64 x 109" (991 x 1626 x 2769 mm) 1144 lb (519 kg)
Operating Weight max. w/Load	2000 lb (907 kg)
Noise Level	75 to 85 dBA (depending on type of cages.)
<b>Equip. Dwg. No.</b>	<b>Reference the following equipment drawings for installation details.</b>
122-998-267	BASIL 3600 BEDDING DISPENSER LEFT HAND CONTROL
122-998-283	BASIL 3600 BEDDING DISPENSER RIGHT HAND CONTROL



---

**For Further Information, contact:**

STERIS®



STERIS Corporation  
5960 Heisley Road  
Mentor, OH 44060-1834 • USA  
440-354-2600 • 800-548-4873  
[www.steris.com](http://www.steris.com)